

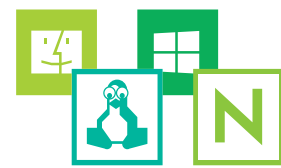
Stampa Monitoraggio e Controllo Tagliare i costi di stampa

PaperCut è il modo più semplice per monitorare e gestire automaticamente la stampa nella vostra organizzazione, potendo controllare i costi e l'impatto ambientale.

Il software PaperCut intercetta i processi sul server di stampa e li analizza, applicando le regole ed i criteri di stampa.

PaperCut ti dà il controllo completo sopra il vostro gruppo di dispositivi, che ti permette di:

- ▶ Gestire e controllare la stampa mediante rilevamento, contingenti o pay-per-stampa di ricarica.
- ▶ Supportare gli utenti di laptop e netbook con stampa senza conducente.
- ▶ Applicare le regole di base ai criteri di stampa per minimizzare gli sprechi e massimizzare la produttività, ad esempio, per impedire la stampa di e-mail, obbligando nei processi di grandi dimensioni il fronteretro o limitare la stampa a colori.
- ▶ Monitora la tua flotta di stampa: il livello del toner e gli errori della stampante avvisando via e-mail o SMS.



Supported Platforms

Uno sguardo alle caratteristiche di PaperCut:

- ▶ Completamente cross-platform, supporta tutti i principali sistemi operativi, inclusi ambienti misti
- ▶ Scalabile per reti di tutte le dimensioni, da cinque a 500.000 utenti finali
- ▶ Licenza aziendale senza limiti sul numero di server, workstation, stampanti, sistemi operativi o domini
- ▶ Match your organization's look and feel with seamless integration with your intranet
- ▶ Moderni software sotto sviluppo attivo
- ▶ Semplice da usare per amministrazione
- ▶ Utilizzato da più di 50.000 organizzazioni ed in oltre 100 paesi.

Consentire agli utenti di vedere il loro impatto ambientale grazie al widget Paper-Less Alliance (una piccola applicazione che si trova sul desktop).



Ulteriori caratteristiche di PaperCut...

Per controllori finanziari

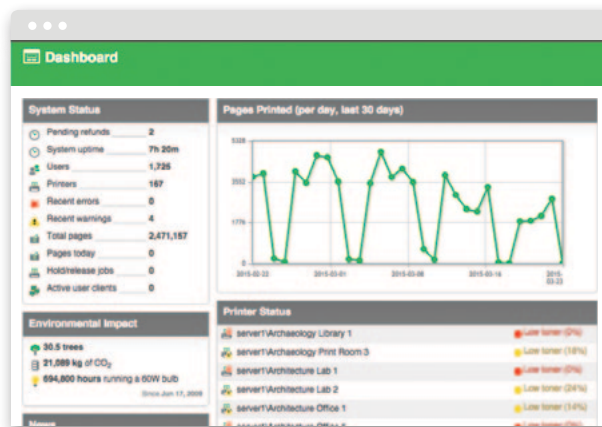
- ▶ Dati di uscita e costi ad utente anche per stampante particolareggiate
- ▶ Traccia e allocare i costi al reparto, centro di costo, facoltà o clienti
- ▶ Semplice da utilizzare e trovare le informazioni più necessarie
- ▶ Tagliare i costi di stampa, migliorando il flusso di lavoro

Per gli amministratori di sistema

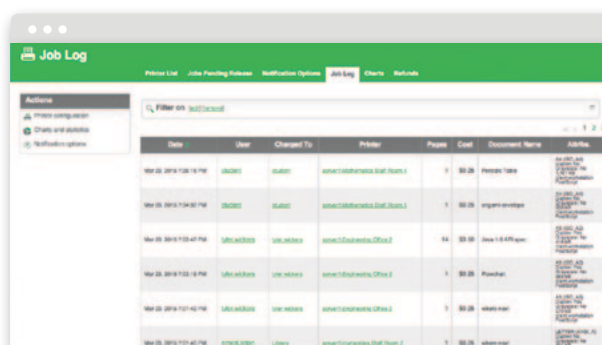
- ▶ **Installazione semplice**
S'installa sul vostro server e traccia in automatico tutte le stampanti. Il software client non è obbligatorio per il rilevamento di stampa base.
- ▶ **Setup veloce ed intuitivo**
gestisce automaticamente gli utenti finali conosciuti ai servizi directory come Active Directory e LDAP
- ▶ **Stampa senza driver**
Web stampa consente agli utenti finali di stampare in modalità wireless da computer portatili e netbook senza autenticazione o installazione di driver. Stampa Web è completamente integrato nel processo di ricarica/contabilità/quote di stampa standard di PaperCut.
- ▶ **Gli account condivisi**
Gli utenti possono facilmente allocare i costi delle commesse ai dipartimenti, clienti o progetti con software client popup dei costi.
- ▶ **Report e registrazione completa**
Oltre 50 report in formati standard (PDF, CSV, HTML)
- ▶ **Database integration**
Use the in-built database or configure to use your existing databases (MS SQL Server, Oracle, MySQL, PostgreSQL)
- ▶ **Watermark every print**
Automatically add a username or other information to the bottom of every page
- ▶ **Digital signatures**
Watermark all jobs with a digital signature to track document origin/source
- ▶ **Hold/release queue**
Release sensitive documents at point of printing
- ▶ **Delegate administration rights**
Grant specific rights by functional areas
- ▶ **Intranet integration options** and fully documented API and scripting interface
- ▶ **Print Archiving**
View print job content interactively in the browser.

For End Users

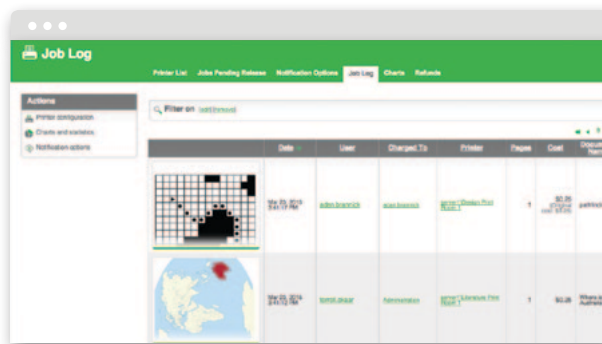
- ▶ **Intuitive, customizable web interface** shows usage tracking, or runs silently
- ▶ **Optional client software** offers authentication, confirmation of print job cost, account balances and cost allocation
- ▶ **Shows usage and impact** by tree or by CO₂ volume
- ▶ **Show popups prompting users** on situations such as not printing jobs duplex, attempting to print emails, or suggestion to print grayscale when printing from a web browser
- ▶ **Flexible payment options** for pay-for-print including pre-paid voucher cards and online payment gateways
- ▶ **Deployment flexibility** with options for highly visible quota or charging control to invisible silent tracking
- ▶ **Mobile Print Release** allows you to release your job at the copier with any modern smartphone



Controllare il sistema in un colpo d'occhio



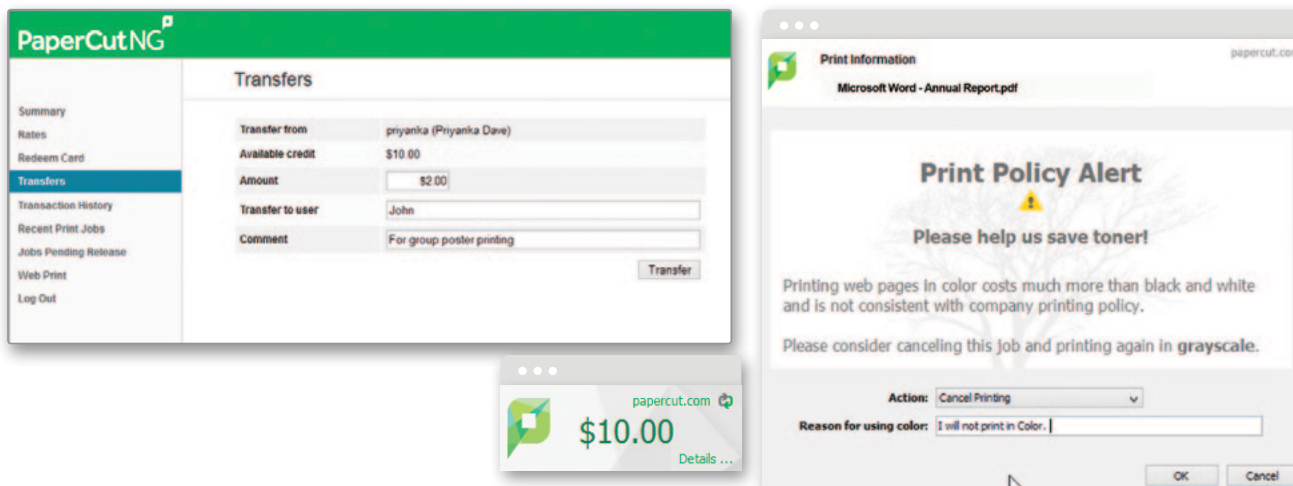
Full Logging & Reports for Analysis



Print Archiving Thumbnail View



Comprehensive Built-in Reports



Intuitive Browser-based End User Interface

PaperCut in Action

User Management

Automatic User Import

PaperCut automatically synchronizes user accounts with leading directory services such as Active Directory, Open Directory, LDAP, eDirectory, etc. Import end user details from:

- ▶ The full domain
- ▶ A selected group within a domain
- ▶ An organizational unit
- ▶ A spreadsheet.

Account Creation Rules

Move to a fully self-administering system by defining rules to enable PaperCut to automatically create new user accounts on demand based on group membership. Define new account properties including:

- ▶ Initial credit (can be allocated daily, weekly or monthly)
- ▶ Access and security rights level.

Load and Error Event Reporting

The load carried by each printer is clearly displayed in the administration interface. IT managers can use this information to determine where additional printers may be required, or detect printers unsuitable for the situation or location.

The system can also email administrators on error events such as paper jams or low toner.

Page-level Color Detection

Use the advanced charging interface to enable page-level color detection. This "looks" at each page of a document and detects the use of color. End users are only charged the color rate on pages that have color, providing a more precise charging method.

Advanced Filtering and Restrictions

Use PaperCut's job filtering and/or advanced scripting control to implement print policies and improve device utilization.

Options include:

- ▶ Route large jobs to dedicated high-volume printers
- ▶ Ask end users to confirm single sided output
- ▶ Delete duplicate jobs or those with incorrect paper sizes automatically
- ▶ Discourage printing of emails via popup warnings
- ▶ Enable limited free printing during class times
- ▶ Suggest alternate printers when a device is offline
- ▶ Build your own rules with advanced print scripting.

By combining PaperCut's filter rules, administrators can improve printer use, minimize queue hogging, and avoid wasteful print jobs. For more advanced control, use print scripting. PaperCut includes dozens of pre-built recipes and a simple JavaScript IDE to help you build your own scripts.

One Click Reporting

PaperCut offers more than 50 reports out of the box, in PDF, HTML or Microsoft Excel (.csv) format. Access reports from any web browser, or schedule them to be automatically generated and emailed. You can set up reports to use your own header, and create reports with custom data by specifying date ranges, filtering and sorting by the data available.

Local and Server Printers

PaperCut can track printing on multiple servers and locally attached desktop printers. Web Print – a unique feature of PaperCut – enables wireless printing for laptop and netbook users and requires no installation of print drivers or server authentication.

PaperCut works seamlessly in heterogeneous environments – you can host some printers on Macintosh or Linux, and others on Windows and have them all working together as one system without the need for separate licensing.

Technical Specifications

Scalability:

- ▶ Suitable for networks of 5 to 500,000+ users

Architecture:

- ▶ Single server or multi-server environments
- ▶ Monitor locally attached printers
- ▶ Client software is optional
- ▶ Available in 20+ languages and currency formats world-wide

Licensing:

- ▶ Enterprise-wide license: unlimited printers, servers, and workstations
- ▶ Licensed based on number of end users

Open Systems:

- ▶ Open documented database schema
- ▶ XML Web Services API with sample code

Supported Server Operating Systems:

- ▶ Microsoft Windows Server (any edition including 64-bit and server core)
- ▶ Mac OS X Server (10.4 or higher)
- ▶ Linux (any modern distribution)
- ▶ Novell OES Linux and iPrint

Supported User Directory Services:

- ▶ Active Directory (native integration including nested groups and OU's)
- ▶ OpenDirectory
- ▶ eDirectory
- ▶ LDAP
- ▶ NIS, PAM, Samba, and others.

Supported Workstation Operating Systems:

- ▶ Microsoft Windows (any edition)
- ▶ Mac OS X (10.4 or higher)
- ▶ Linux (any modern distribution)
- ▶ Unix Workstation (Java required to run client software)

Printers:

- ▶ Almost all major laser, inkjet, label and wide-format printers.
- ▶ Supported print languages: PCL, PCL6, HPGL, Postscript, PCL-GUI, Ricoh RPCS, Epson ESC, QPDL, various GDI printers and many language that don't even have names.

Supported Database Servers:

- ▶ Self managing internal database: suitable for up to 5,000 end users
- ▶ Microsoft SQL Server 2000/2005/2008 (either 32 or 64 bit)
- ▶ Microsoft SQL Express 2005/2008 (free from Microsoft)
- ▶ Microsoft SQL Server 2012 & Server Express 2012
- ▶ PostgreSQL 7.1 or higher
- ▶ MySQL 5.0 or higher
- ▶ Oracle 9.2 or higher

Supported Cluster Environments:

- ▶ Microsoft Failover Server
- ▶ Microsoft Cluster Server
- ▶ Veritas Cluster Server
- ▶ Linux HA

Encryption:

- ▶ SSL encryption used for sensitive client server communication.

An Open System

PaperCut NG is an open, vendor neutral solution. It has a robust API that can be used by programmers to automate functions and interface with third party systems. The system is designed using open standards and supports all major server and workstation operating systems.

All versions of PaperCut for all operating systems are generated from one code base so new features and improvements are available simultaneously on all platforms. PaperCut is supported directly by its developers, a friendly and approachable team. All customers are provided with source code access.



Download and
install your FREE
no obligation
40 day trial now

sales@papercut.com

www.papercut.com